

MONTHLY MEMBERSHIP PROGRESS REPORT

District 322C2

Results as of: 5/31/2024

GMT:

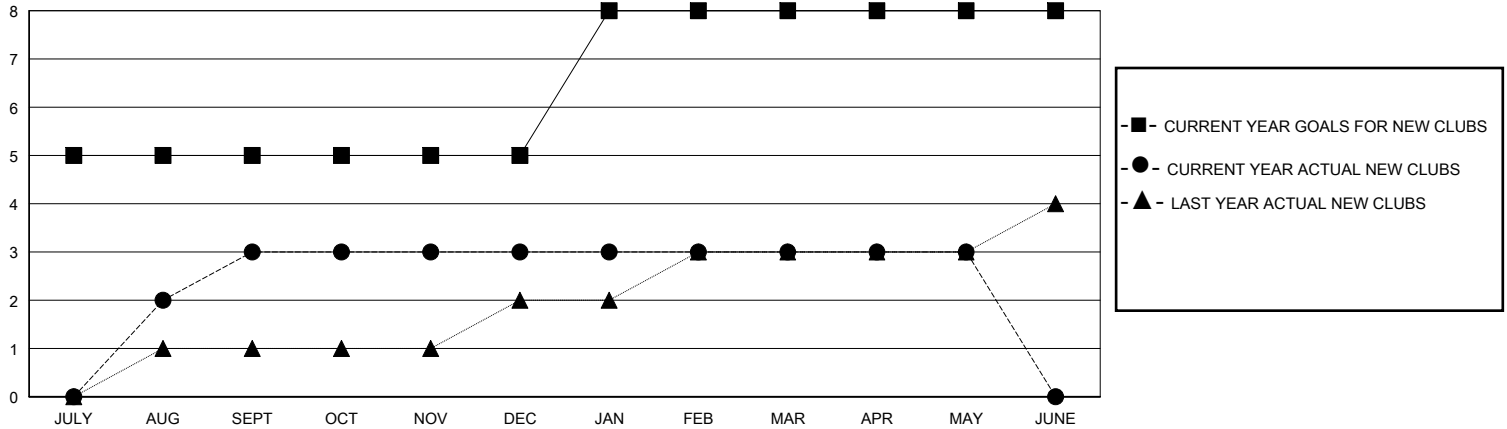
LOCATION INDIA

GMT CA

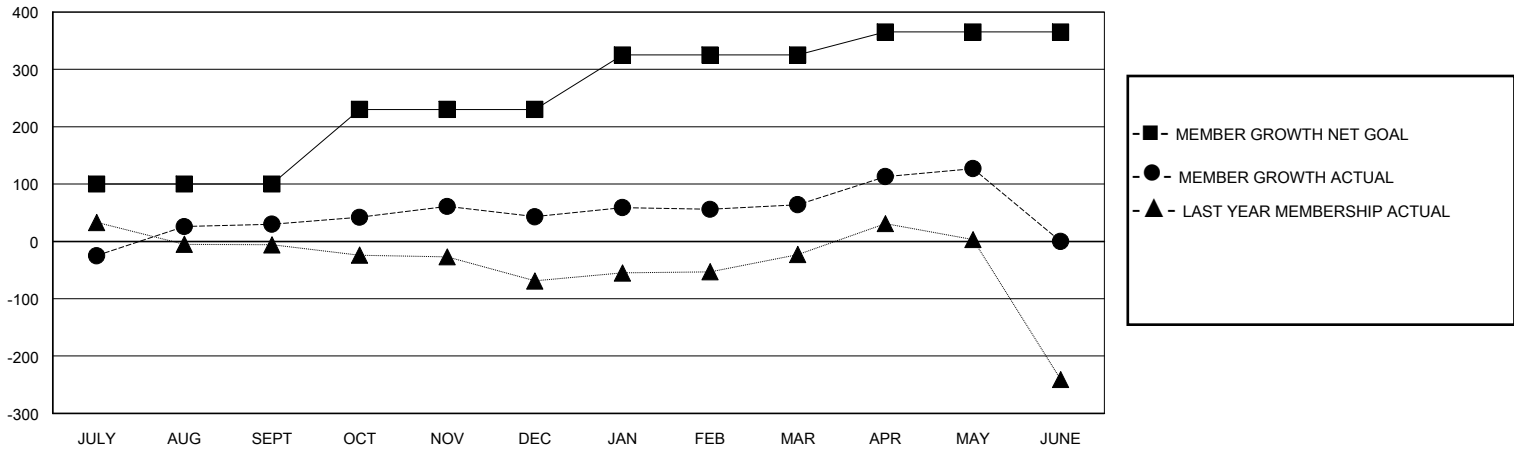
Clubs			
RESULTS FOR 2023-2024			
QUARTER	NEW CLUB GOAL	NEW CLUBS	DROPPED CLUBS
JULY/AUG/SEPT	5	3	0
OCT/NOV/DEC	0	0	1
JAN/FEB/MAR	3	0	0
APR/MAY/JUNE	0	0	0

Members			
RESULTS FOR 2023-2024			
QUARTER	MEMBER GROWTH NET GOAL	MEMBER GROWTH ACTUAL	DROPPED MEMBERS ACTUAL (including transfers)
JULY/AUG/SEPT	100	241	182
OCT/NOV/DEC	130	97	74
JAN/FEB/MAR	95	30	7
APR/MAY/JUNE	40	79	6

GOALS AND ACTUAL NEW CLUBS CUMULATIVE



GOALS AND ACTUAL MEMBERS CUMULATIVE



DROPPED CLUBS: 1	41 CLUBS OF 48 ADDED 1 OR MORE NEW MEMBERS	<u>GENDER DISTRIBUTION</u>	
<u>DROPPED MEMBERS</u>		MALE	1,511 (65.35%)
DECEASED	6	FEMALE	800 (34.60%)
CLUB CANCELLED	19	TOTAL FAMILY UNIT MEMBERS 1,955	
OTHER	242		
TOTAL	267		
CLICK HERE FOR CUMULATIVE MEMBERSHIP DATA		TOTAL FAMILY UNIT MEMBERS 1,955	
		FAMILY MEMBERS PAYING HALF DUES 1,335	